



ANVERALLY & SONS (PVT)LTD.

(Exporters of 100% Pure Ceylon Tea)

A Family of Trusted Tea Exporters Since 1890



COLOMBO TEA AUCTION REPORT FOR 27th & 28th AUGUST 2019.

Contents

- **Market Report.**
- **Auction Quantities.**
- **Auction Quantity and Average in SL Rs.**
- **Current Crop & Weather.**

EX ESTATE

- BOPF** - Western teas firm and Uva teas firm to dearer by US\$0.11-0.17.
BOP - Western teas dearer by US\$0.11 with good demand and seasonal Uva teas dearer by US\$0.11-0.17.
PEK/FBOP - Firm market.
PF1 - Best and below best firm and others lower by US\$0.03-0.06.
BP1/BPS - Firm market.

HIGH & MEDIUM

- OPA** - Bottom teas dearer by US\$0.06-0.11 and others firm.
OP - Best teas lower by US\$ 0.06 and others firm.
OP1 - Firm market.
BOP1 - Firm market.
FBOP - Firm market.
FF1 - Firm market.
FF - Firm market.
PEK/PEK1 - Overall lower by US\$ 0.06-0.11.

LOW GROWN LEAFY

- OPA** - Best teas lower by US\$0.06-0.09 and others firm to last.
OP - Best teas lower by US\$0.06-0.09 and others firm to last.
OP1 - Select best and best types dearer by US\$0.06-0.09 and others firm.
BOP1 - Firm market.
PEK/PEK1 - Below best types dearer by US\$0.06-0.11 and others firm to last.

LOW GROWN TIPPY

- FBOP** - Select best and best teas dearer by US\$0.03-0.06, below best and bottom teas lower by US\$0.06.
FF1 - Select best and best teas dearer by US\$0.03-0.06 and others lower by US\$0.03-0.06.
FF - Select best and best types dearer by US\$0.06-0.11, others lower by US\$0.06-0.09.

PREMIUM FLOWERY

- FBOPFEXSP** - Overall dearer by US\$0.28-0.40 with good demand.
FBOPFSP - Overall dearer by US\$0.28-0.40 with good demand.

OFFGRADES

- BM** - Select best dearer by US\$0.06 and others lower by US\$0.03-0.06.
FNGS - High grown teas lower by US\$0.06, select best low grown teas firm and others lower by US\$0.03.
BP - Firm market.

[Type here]

BOP1A

BOP1A - Select best teas firm, best types firm to lower by US\$0.06 and others lower by US\$0.06.

DUST

DUST1 - Overall lower by US\$0.06-0.11.

DUST - Overall lower by US\$0.06-0.11.

PD - High grown teas firm to last, medium teas firm to lower by US\$0.06 and low grown teas lower by US\$0.06-0.09.

Quantities sold this week vs. corresponding auction 2018.

<u>SALE OF 27TH & 28TH AUGUST 2019 - SALE NO : 34</u>			<u>SALE OF 28TH & 29TH AUGUST 2018 - SALE NO : 34</u>		
<u>CATEGORY</u>	<u>LOTS</u>	<u>QUANTITY</u>	<u>CATEGORY</u>	<u>LOTS</u>	<u>QUANTITY</u>
EX ESTATE	976	1,108,106	EX ESTATE	745	810,981
HIGH & MEDIUM	1,634	858,353	HIGH & MEDIUM	1,224	617,906
LOW GROWN - LEAFY	4,371	2,084,122	LOW GROWN - LEAFY	4,096	1,815,015
LOW GROWN - TIPPY	2,185	1,176,922	LOW GROWN - TIPPY	2,035	1,062,793
PREMIUM FLOWERY	480	99,766	PREMIUM FLOWERY	379	68,195
OFF GRADES	1,570	1,030,346	OFF GRADES	1,584	1,022,085
BOP1A	675	291,491	BOP1A	701	281,390
DUST	736	766,428	DUST	477	465,861
TOTAL	12,627	7,415,534	TOTAL	11,241	6,144,226

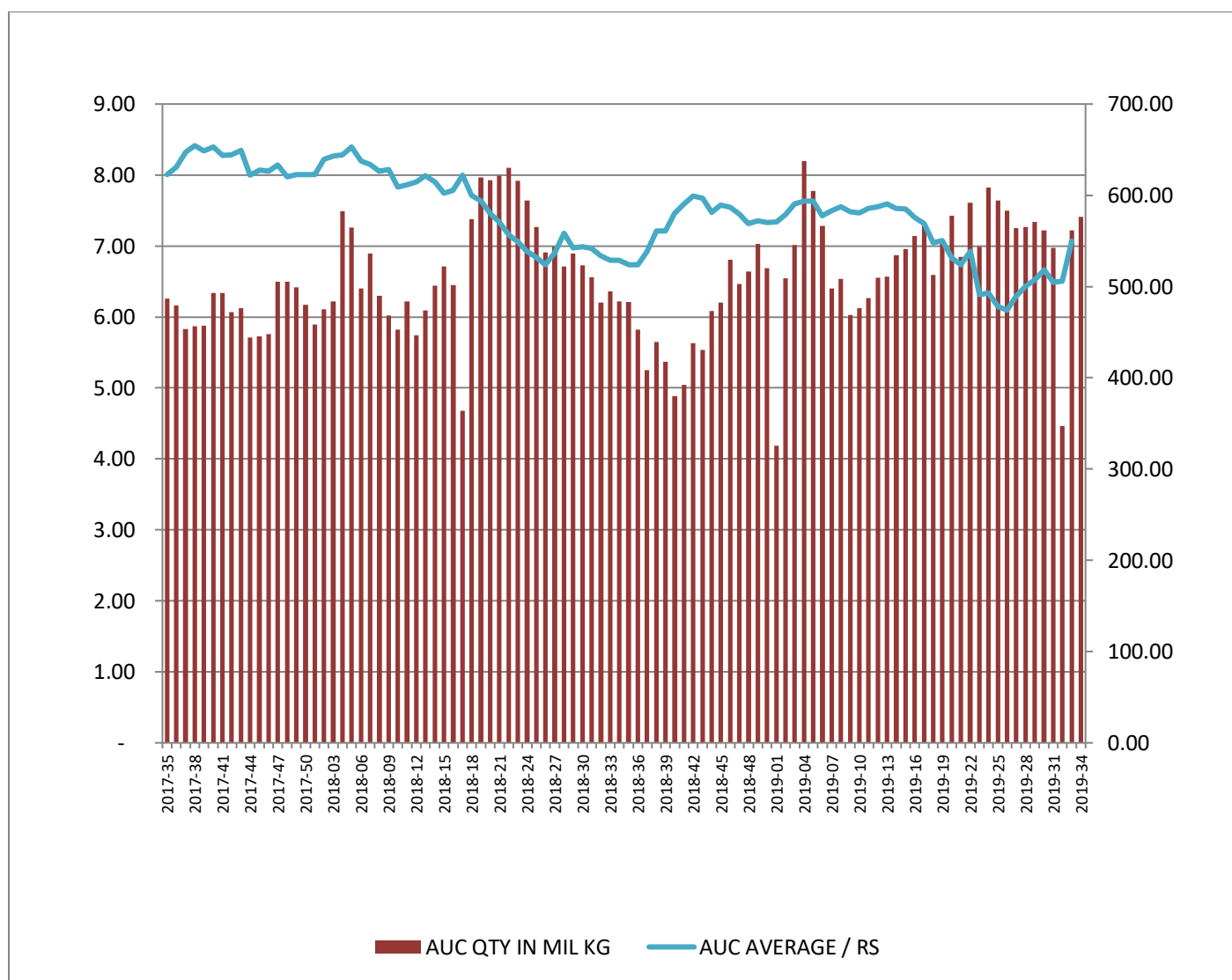
Upcoming auction quantities vs. corresponding sale 2018.

<u>SALE OF 03RD & 04TH SEPTEMBER 2019 - SALE NO :</u>			<u>SALE OF 04TH & 05TH SEPTEMBER 2018 - SALE NO :</u>		
<u>35</u>			<u>35</u>		
<u>CATEGORY</u>	<u>LOTS</u>	<u>QUANTITY</u>	<u>CATEGORY</u>	<u>LOTS</u>	<u>QUANTITY</u>
EX ESTATE	929	1,064,656	EX ESTATE	731	810,684
HIGH & MEDIUM	1,353	693,950	HIGH & MEDIUM	1,119	562,726
LOW GROWN - LEAFY	3,977	1,875,466	LOW GROWN - LEAFY	4,134	1,819,826
LOW GROWN - TIPPY	2,003	1,090,246	LOW GROWN - TIPPY	2,003	1,046,899
PREMIUM FLOWERY	377	86,204	PREMIUM FLOWERY	318	54,726
OFF GRADES	1,678	1,042,565	OFF GRADES	1,744	1,099,182
BOP1A	724	296,464	BOP1A	792	314,467
DUST	646	622,383	DUST	527	507,273
TOTAL	11,687	6,771,934	TOTAL	11,368	6,215,783

[Type here]

SALE OF 09TH & 10TH SEPTEMBER 2019 - SALE NO : <u>36</u>			SALE OF 11TH & 12TH SEPTEMBER 2018 - SALE NO : <u>36</u>		
CATEGORY	LOTS	QUANTITY	CATEGORY	LOTS	QUANTITY
EX ESTATE	829	947,161	EX ESTATE	678	735,338
HIGH & MEDIUM	1,411	754,364	HIGH & MEDIUM	1,106	526,596
LOW GROWN - LEAFY	4,286	2,039,925	LOW GROWN - LEAFY	3,988	1,739,916
LOW GROWN - TIPPY	2,265	1,229,966	LOW GROWN - TIPPY	1,942	989,732
PREMIUM FLOWERY	390	89,134	PREMIUM FLOWERY	275	45,927
OFF GRADES	1,677	1,057,698	OFF GRADES	1,681	1,002,132
BOP1A	738	314,757	BOP1A	732	276,127
DUST	704	711,356	DUST	509	502,255
TOTAL	12,300	7,144,361	TOTAL	10,911	5,818,023

Auction Quantity sold and auction average in SL.



[Type here]

Crop & Weather

For the period 19 - 25 August 2019

Western/Nuwara Eliya/Uva and Udupussellawa Regions

All four regions experienced dull and rainy weather throughout the week. The Department of Meteorology forecasts showers in the week ahead.

Low Grows

Ruhuna and Sabaragamuwa regions reported wet weather throughout the week.

Crop Intake

Western, Udupussellawa, Uva, Ruhuna and Sabaragamuwa regions reported a decline in the crop intake, whilst the Nuwara Eliya Region maintained.



No. 17, Dr. Lester James Peiris Mawatha,
Colombo 05, Sri Lanka.
Tel: +94 11 2555594-7 Fax: +94 11 2555598
Email: info@anverally.com. Web: www.anverally.com



[Type here]