



# ANVERALLY & SONS (PVT)LTD.

(Exporters of 100% Pure Ceylon Tea)

A Family of Trusted Tea Exporters Since 1890



## COLOMBO TEA AUCTION REPORT FOR 03<sup>rd</sup> & 04<sup>th</sup> SEPTEMBER 2019.

### Contents

- **Market Report.**
- **Auction Quantities.**
- **Auction Quantity and Average in SL Rs.**
- **Current Crop & Weather.**

### EX ESTATE

- BOPF** - Western best types firm, bottom teas lower by US\$ 0.06-0.11 and no demand for bottom teas, Uva teas firm to dearer by US\$ 0.11-0.17.
- BOP** - Western best types firm with good demand, bottom teas lower by US\$ 0.11-0.17 and seasonal Uva teas firm.
- PEK/FBOP** - Firm market.
- PF1** - Best teas firm and bottom teas lower by US\$ 0.06.
- BPS** - Best teas firm and bottom teas lower by US\$ 0.06.

### HIGH & MEDIUM

- OPA** - Firm market.
- OP** - Select best teas lower by US\$ 0.06-0.09 and others firm.
- OP1** - Firm market.
- BOP1** - Firm market.
- FBOP** - Select best dearer by US\$ 0.06-0.09 and others firm.
- FF1** - Select best dearer by US\$ 0.03-0.06, below best lower by US\$ 0.06 and others firm.
- FF** - Firm market.
- PEK/PEK1** - Select best and best teas firm, others lower by US\$ 0.06.

### LOW GROWN LEAFY

- OPA** - Overall lower by US\$ 0.03-0.06.
- OP** - Overall lower by US\$ 0.03-0.06.
- OP1** - Select best and best types dearer by US\$ 0.11-0.17 and others firm.
- BOP1** - Select best and best types firm and others lower by US\$ 0.06.
- PEK/PEK1** - Bold pekoes lower by US\$ 0.09-0.11 and others firm to last.

### LOW GROWN TIPPY

- FBOP** - Select best and best teas dearer by US\$ 0.06-0.09, below best and bottom teas firm.
- FF1** - Firm market.
- FF** - Select best types dearer by US\$ 0.06 and others firm.

### PREMIUM FLOWERY

- FBOPFEXSP** - Overall dearer by US\$ 0.11-0.17.
- FBOPFSP** - Firm market.

[Type here]

**OFFGRADES**

- BM** - Select best types firm and others lower by US\$ 0.06-0.09.  
**FNGS** - High grown teas lower by US\$ 0.06, others lower by US\$ 0.06-0.09.  
**BP** - Overall lower by US\$ 0.06-0.11.

**BOP1A**

- BOP1A** - Select best and best types firm and others lower by US\$ 0.06-0.09.

**DUST**

- DUST1** - High grown select best teas dearer by US\$ 0.06-0.09, best types maintaining with good demand and low grown teas irregularly lower by US\$ 0.03-0.06.  
**DUST** - High grown and medium grown teas firm, low grown teas irregularly lower by US\$ 0.03-0.06.  
**PD** - High grown and medium grown teas dearer by US\$ 0.06-0.11 and others firm.

**Quantities sold this week vs. corresponding auction 2018.**

<b>SALE OF 03RD &amp; 04TH SEPTEMBER 2019 - SALE NO :</b>			<b>SALE OF 04TH &amp; 05TH SEPTEMBER 2018 - SALE NO :</b>		
<b>35</b>			<b>35</b>		
<b>CATEGORY</b>	<b>LOTS</b>	<b>QUANTITY</b>	<b>CATEGORY</b>	<b>LOTS</b>	<b>QUANTITY</b>
EX ESTATE	929	1,064,656	EX ESTATE	731	810,684
HIGH & MEDIUM	1,353	693,950	HIGH & MEDIUM	1,119	562,726
LOW GROWN - LEAFY	3,977	1,875,466	LOW GROWN - LEAFY	4,134	1,819,826
LOW GROWN - TIPPY	2,003	1,090,246	LOW GROWN - TIPPY	2,003	1,046,899
PREMIUM FLOWERY	377	86,204	PREMIUM FLOWERY	318	54,726
OFF GRADES	1,678	1,042,565	OFF GRADES	1,744	1,099,182
BOP1A	724	296,464	BOP1A	792	314,467
DUST	646	622,383	DUST	527	507,273
<b>TOTAL</b>	<b>11,687</b>	<b>6,771,934</b>	<b>TOTAL</b>	<b>11,368</b>	<b>6,215,783</b>

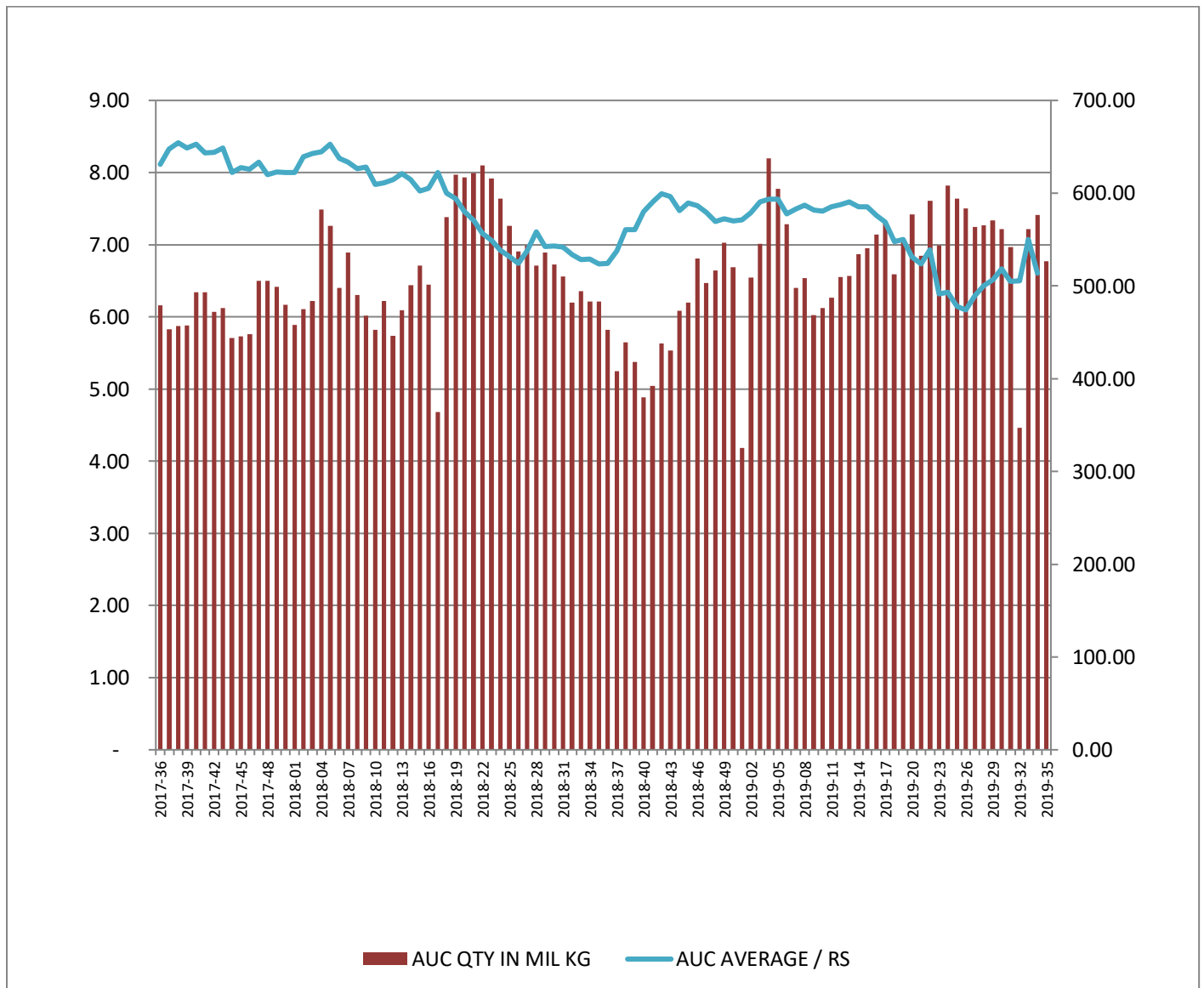
**Upcoming auction quantities vs. corresponding sale 2018.**

<b>SALE OF 09TH &amp; 10TH SEPTEMBER 2019 - SALE NO :</b>			<b>SALE OF 11TH &amp; 12TH SEPTEMBER 2018 - SALE NO :</b>		
<b>36</b>			<b>36</b>		
<b>CATEGORY</b>	<b>LOTS</b>	<b>QUANTITY</b>	<b>CATEGORY</b>	<b>LOTS</b>	<b>QUANTITY</b>
EX ESTATE	829	947,161	EX ESTATE	678	735,338
HIGH & MEDIUM	1,411	754,364	HIGH & MEDIUM	1,106	526,596
LOW GROWN - LEAFY	4,286	2,039,925	LOW GROWN - LEAFY	3,988	1,739,916
LOW GROWN - TIPPY	2,265	1,229,966	LOW GROWN - TIPPY	1,942	989,732
PREMIUM FLOWERY	390	89,134	PREMIUM FLOWERY	275	45,927
OFF GRADES	1,677	1,057,698	OFF GRADES	1,681	1,002,132
BOP1A	738	314,757	BOP1A	732	276,127
DUST	704	711,356	DUST	509	502,255
<b>TOTAL</b>	<b>12,300</b>	<b>7,144,361</b>	<b>TOTAL</b>	<b>10,911</b>	<b>5,818,023</b>

[Type here]

<b>SALE OF 17TH &amp; 18TH SEPTEMBER 2019 - SALE NO :</b>			<b>SALE OF 18TH &amp; 19TH SEPTEMBER 2018 - SALE NO :</b>		
<b>37</b>			<b>37</b>		
<b>CATEGORY</b>	<b>LOTS</b>	<b>QUANTITY</b>	<b>CATEGORY</b>	<b>LOTS</b>	<b>QUANTITY</b>
EX ESTATE	874	1,011,187	EX ESTATE	628	661,812
HIGH & MEDIUM	1,611	879,020	HIGH & MEDIUM	894	428,179
LOW GROWN - LEAFY	4,281	2,016,001	LOW GROWN - LEAFY	3,849	1,663,301
LOW GROWN - TIPPY	2,171	1,164,744	LOW GROWN - TIPPY	1,739	880,731
PREMIUM FLOWERY	439	107,562	PREMIUM FLOWERY	243	42,841
OFF GRADES	1,620	1,049,360	OFF GRADES	1,452	878,884
BOP1A	750	314,083	BOP1A	663	250,401
DUST	792	783,066	DUST	474	447,628
<b>TOTAL</b>	<b>12,538</b>	<b>7,325,023</b>	<b>TOTAL</b>	<b>9,942</b>	<b>5,253,777</b>

**Auction Quantity sold and auction average in SL.**



[Type here]

## **Crop & Weather**

**For the period 26 August- 01 September 2019**

### **Western/Nuwara Eliya Regions**

Dull and rainy weather was reported throughout the week in both regions, and showers are expected to continue in the week ahead according to the Department of Meteorology.

### **Uva/Udapussellawa Regions**

Both regions reported bright weather with occasional showers throughout the week.

### **Low Grown**

Ruhuna and Sabaragamuwa regions reported heavy showers throughout the week. According to the Department of Meteorology heavy showers may occur in the days to come.

### **Crop Intake**

Uva, Udapussellawa and Sabaragamuwa regions maintained the crop intake, whilst Western and Nuwara Eliya regions showed a decline.



No. 17, Dr. Lester James Peiris Mawatha,  
Colombo 05, Sri Lanka.  
Tel: +94 11 2555594-7 Fax: +94 11 2555598  
Email: [info@anverally.com](mailto:info@anverally.com). Web: [www.anverally.com](http://www.anverally.com)



[Type here]