



ANVERALLY & SONS (PVT)LTD.

(Exporters of 100% Pure Ceylon Tea)

A Family of Trusted Tea Exporters Since 1890



COLOMBO TEA AUCTION REPORT FOR 20th & 21st AUGUST 2019.

Contents

- **Market Report.**
- **Auction Quantities.**
- **Auction Quantity and Average in SL Rs.**
- **Current Crop & Weather.**

EX ESTATE

- BOPF** - Firm market and good teas were maintaining with a good demand where seasonal Uva teas dearer by US\$ 0.11-0.17.
- BOP** - Firm market and good teas were maintaining with a good demand where seasonal Uva teas dearer by US\$ 0.11-0.17.
- PEK/FBOP** - Overall firm except for seasonal Uva teas which are dearer by US\$ 0.17-0.28.
- PF1** - Best and below best firm and others lower by US\$ 0.03-0.06.
- BP1/BPS** - Firm market.

HIGH & MEDIUM

- OPA** - Bottom teas dearer by US\$ 0.09-0.14 and others dearer by US\$ 0.06-0.11.
- OP** - Best teas lower by US\$ 0.06-0.09 and others lower by US\$ 0.06.
- OP1** - Firm market.
- BOP1** - Select best teas dearer by US\$ 0.06-0.11 and others firm.
- FBOP** - Best teas dearer by US\$ 0.06-0.11 and others firm.
- FF1** - Best teas dearer by US\$ 0.06-0.11 and others firm.
- FF** - Firm market.
- PEK/PEK1** - Firm market.

LOW GROWN LEAFY

- OPA** - Firm market.
- OP** - Overall lower by US\$ 0.06-0.11.
- OP1** - Select best and best types dearer by US\$ 0.06-0.09 and others firm.
- BOP1** - Firm market.
- PEK/PEK1** - Firm market.

LOW GROWN TIPPY

- FBOP** - Select best and best teas lower by US\$ 0.06-0.09, below best firm to lower by US\$ 0.06 and bottom teas firm to last.
- FF1** - Select best and best teas lower by US\$ 0.06, below best and bottom teas firm to last.
- FF** - Overall firm to lower by US\$ 0.06-0.09.

PREMIUM FLOWERY

- FBOPFEXSP** - Overall dearer by US\$ 0.11-0.17.
- FBOPFSP** - Overall dearer by US\$ 0.17.

[Type here]

OFFGRADES

- BM** - Overall lower by US\$ 0.06.
FNGS - High grown teas lower by US\$ 0.06 and others firm.
BP - Overall dearer by US\$ 0.06.

BOP1A

- BOP1A** - Select best and best types lower by US\$ 0.06-0.09 and others firm.

DUST

- DUST1** - High grown best teas firm to last and others lower by US\$ 0.06-0.11.
DUST - High grown select best teas firm to last and others irregularly lower by US\$ 0.06.
PD - High grown teas firm to last and others irregularly lower by US\$ 0.06-0.11.

Quantities sold this week vs. corresponding auction 2018.

SALE OF 20TH & 21ST AUGUST 2019 - SALE NO : 33			SALE OF 20TH & 21ST AUGUST 2018 - SALE NO : 33		
CATEGORY	LOTS	QUANTITY	CATEGORY	LOTS	QUANTITY
EX ESTATE	881	989,749	EX ESTATE	679	743,693
HIGH & MEDIUM	1,580	821,593	HIGH & MEDIUM	1,252	620,283
LOW GROWN - LEAFY	4,245	2,065,517	LOW GROWN - LEAFY	4,093	1,815,687
LOW GROWN - TIPPY	2,266	1,200,583	LOW GROWN - TIPPY	2,202	1,158,227
PREMIUM FLOWERY	411	83,796	PREMIUM FLOWERY	380	64,203
OFF GRADES	1,624	1,079,861	OFF GRADES	1,789	1,161,649
BOP1A	800	353,838	BOP1A	772	315,405
DUST	667	680,560	DUST	502	484,869
TOTAL	12,474	7,275,497	TOTAL	11,669	6,364,016

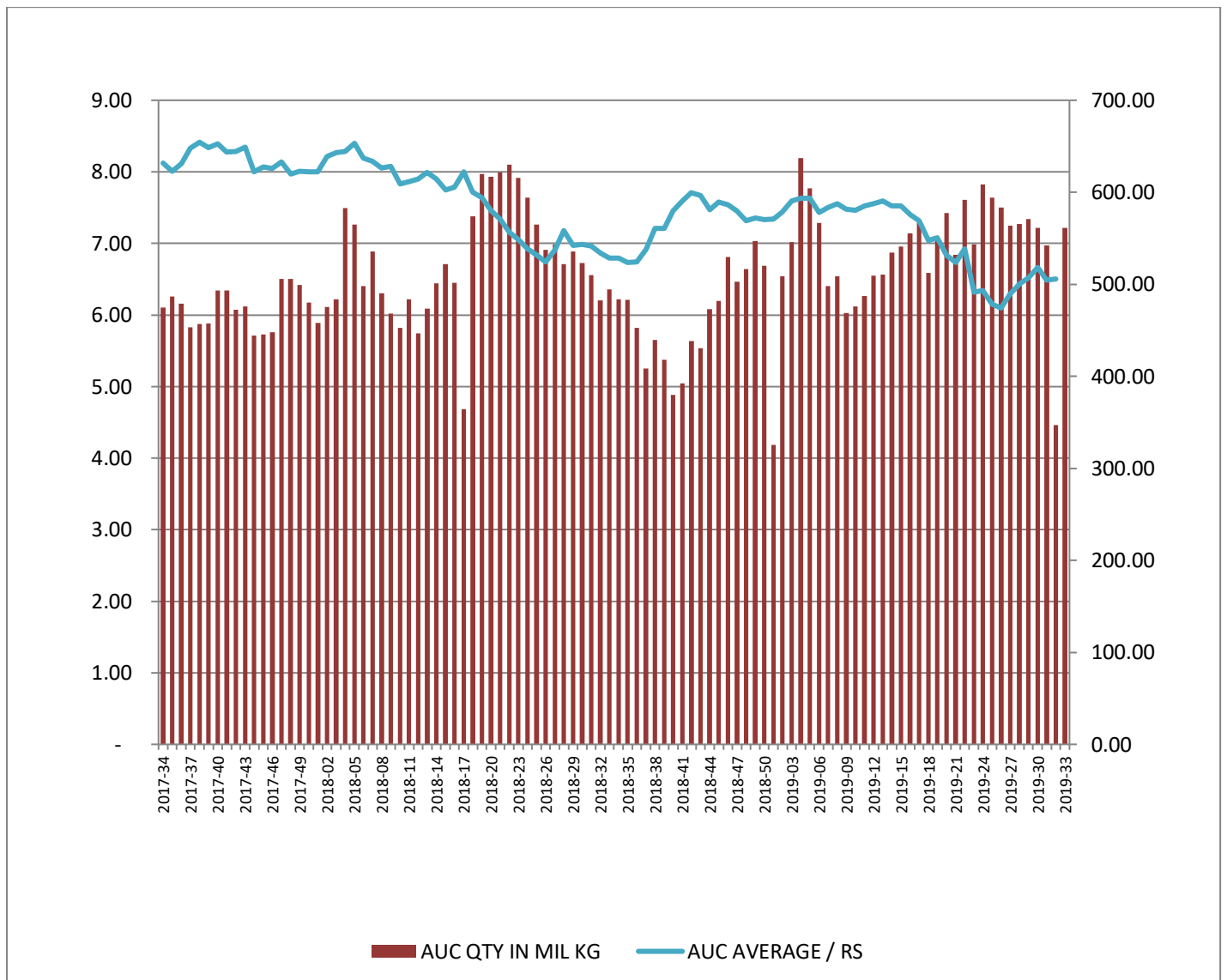
Upcoming auction quantities vs. corresponding sale 2018.

SALE OF 27TH & 28TH AUGUST 2019 - SALE NO : 34			SALE OF 28TH & 29TH AUGUST 2018 - SALE NO : 34		
CATEGORY	LOTS	QUANTITY	CATEGORY	LOTS	QUANTITY
EX ESTATE	976	1,108,106	EX ESTATE	745	810,981
HIGH & MEDIUM	1,634	858,353	HIGH & MEDIUM	1,224	617,906
LOW GROWN - LEAFY	4,371	2,084,122	LOW GROWN - LEAFY	4,096	1,815,015
LOW GROWN - TIPPY	2,185	1,176,922	LOW GROWN - TIPPY	2,035	1,062,793
PREMIUM FLOWERY	480	99,766	PREMIUM FLOWERY	379	68,195
OFF GRADES	1,570	1,030,346	OFF GRADES	1,584	1,022,085
BOP1A	675	291,491	BOP1A	701	281,390
DUST	736	766,428	DUST	477	465,861
TOTAL	12,627	7,415,534	TOTAL	11,241	6,144,226

[Type here]

SALE OF 03RD & 04TH SEPTEMBER 2019 - SALE NO : <u>35</u>			SALE OF 04TH & 05TH SEPTEMBER 2018 - SALE NO : <u>35</u>		
CATEGORY	LOTS	QUANTITY	CATEGORY	LOTS	QUANTITY
EX ESTATE	929	1,064,656	EX ESTATE	731	810,684
HIGH & MEDIUM	1,353	693,950	HIGH & MEDIUM	1,119	562,726
LOW GROWN - LEAFY	3,977	1,875,466	LOW GROWN - LEAFY	4,134	1,819,826
LOW GROWN - TIPPY	2,003	1,090,246	LOW GROWN - TIPPY	2,003	1,046,899
PREMIUM FLOWERY	377	86,204	PREMIUM FLOWERY	318	54,726
OFF GRADES	1,678	1,042,565	OFF GRADES	1,744	1,099,182
BOP1A	724	296,464	BOP1A	792	314,467
DUST	646	622,383	DUST	527	507,273
TOTAL	11,687	6,771,934	TOTAL	11,368	6,215,783

Auction Quantity sold and auction average in SL.



[Type here]

Crop & Weather

For the period 12 - 18 August 2019

Western/Nuwara Eliya Regions

Rain was reported throughout the past week in both regions. The Department of Meteorology forecasts heavy showers in the week ahead in both regions.

Udapussellawa/ Uva Regions

Both regions reported bright weather throughout the week.

Low Grows

Ruhuna and Sabaragamuwa regions experienced wet weather throughout the week. Fairly heavy rain fall (above 50 mm) is predicted in the days to come according to The Department of Meteorology.

Crop Intake

Nuwara Eliya, Sabaragamuwa and Ruhuna regions reported a moderate crop intake, whilst Western, Uva and Udapussellawa regions showed a decline.



No. 17, Dr. Lester James Peiris Mawatha,
Colombo 05, Sri Lanka.
Tel: +94 11 2555594-7 Fax: +94 11 2555598
Email: info@anverally.com. Web: www.anverally.com



[Type here]